



PASCAL[®]

Pascal (Yantai) Petroleum Technology Services Limited.

Addr.: No.264 Huamulan Street, Donglai Street, Longkou City,
Yantai City, Shandong, China.

E-mail: sales@pascal-tech.cn

Tel/WhatsApp: +86 156 5384 7163

Pascal (México) Petroleum Technology Services S.A. de C.V.

Addr.: Anatole France 230, Polanco, Polanco IV Secc, Miguel Hidalgo,
11540 Ciudad de México, México.

E-mail: sales@pascal-tech.cn

Tel: +52 9331057003

Pascal Chemicals (Dongying) Co., Ltd.

Addr.: Room 2102, Building SOH01, Huanghe Delta International Plaza,
No.58 Dongsi Road, Dongying Development Zone, Shandong, China

E-mail: sales@pascal-tech.cn

Tel: +86 156 5384 7163





DONDE ESTAMOS...





MISIÓN

Somos una empresa multinacional que contribuye en el desarrollo de soluciones energéticas, industriales y tecnológicas con excelencia, sustentabilidad e innovación en cada proyecto, implementando soluciones integrales que prioricen el trabajo sostenible con la energía verde. Contribuyendo al desarrollo nacional e internacional mediante alianzas estratégicas, ingeniería de precisión y servicios integrales con el más alto estándar técnico y operativo.

VISIÓN

Ser líderes mundiales en dar solución de cada proyecto de la industria petrolera e industrial, reconocidos por nuestra innovación, calidad y sostenibilidad, que anticipa las necesidades del futuro energético global.

VALORES

Calidad, excelencia técnica, ética profesional, innovación sostenible, promesa relacional, competitividad, Responsabilidad ambiental y social.



¿Quiénes SOMOS?



Pascal (Yantai) Petroleum Technology Services Co., Ltd. / Pascal (México) Petroleum Technology Services S.A. de C.V./ Pascal Chemicals (Dongying) Co., Ltd. Somos una empresa multinacional que colabora de la mano con grupos de fabricantes para proveer de manera directa el suministro, servicios y nuevas tecnologías a la industria petrolera para la reactivación de pozos y campos gas y petróleo. Pascal (Yantai) Petroleum Technology Services Co., Ltd. / Pascal (México) Petroleum Technology Services S.A. de C.V./ Pascal Chemicals (Dongying) Co., Ltd. Damos soluciones no convencionales para proyectos complejos. Especialistas en fabricación, suministro, comercialización y mantenimiento de equipos del sector petrolero bajo los estándares y normas internacionales.



Home ¿Quiénes somos? Suministro Servicios Nuevas tecnologías Noticias Contacto



Servicios de tecnología petrolera

Soluciones no convencionales para proyectos complejos. Especialistas en fabricación y mantenimiento de equipos del sector petrolero.

EXPLORAR



Seguridad

Como nuestra prioridad, nos centramos en la seguridad integral. Es decir, cumplimiento estricto de normas nacionales e internacionales en materia HSE (Health, Safety & Environment)



Creatividad

Nos caracterizamos por aplicar la tecnología y la solución adecuadas de cada reto con el cliente. Somos desarrolladores e innovadores (I+D).



Suministro:

[Home](#)

[¿Quiénes somos?](#)

[Suministro](#)

[Servicios](#)

[Nuevas tecnologías](#)

[Noticias](#)

[Contacto](#)

Petroleo

▶ Perforación

› Equipo

› Materiales

▶ Cementación

› Equipo

› Materiales

▶ Producción

› Equipo

› Materiales

Minería y construcción

▶ Explotación y extracción

› Equipo

› Materiales

Energía

› Equipo

› Materiales



¿Quiénes SOMOS?



Servicios:

[Home](#)

[¿Quiénes somos? ▼](#)

[Suministro ▼](#)

[Servicios ▼](#)

[Nuevas tecnologías ▼](#)

[Noticias](#)

[Contacto ▼](#)

Material en Stock

› Refacciones de alta demanda

Comercialización de Hidrocarburos

› Transporte de logística crudo

› Terminales de almacenamiento

› Alianzas logísticas

Servicio Técnico

› Proyecto llave en mano

› Ingeniería Inversa

▲ Servicio técnico

› Plantas de energía

› Refinería

› Minería

› Baterías

› Estaciones de gas

› Energías nuevas

Servicio Marino

› Robot Marino

› Embarcaciones

› Servicios para Muelles

› Servicios para Barcos

Recertificaciones

› Equipos Petroleros

› Periféricos

Nuevas tecnologías:

Home

¿Quiénes somos? ▼

Suministro ▼

Servicios ▼

Nuevas tecnologías ▼

Noticias

Contacto ▼

Petroleo

- › Equipos Inteligentes
- › Varilla de Succión Contínua
- › Tuberías de Poliéster
- › Anti-Fugas (Petróleo y Gas)
- › Proyectos de economía circular, captura de carbono y eficiencia energética

Minería

- › Tubería Flexible

Contraincendio





Pascal (Yantai) Petroleum Technology Services Co., Ltd. y Pascal (México) Petroleum Technology Services S.A. de C.V. Cuenta con las siguientes certificaciones ISO + Certificaciones internacionales de nuestros fabricantes hermanos:

MANAGEMENT SYSTEM CERTIFICATIONS:

- American Petroleum Institute API Q1
- Quality Management System ISO 9001
- Environmental Management System ISO 14001
- Occupational health and safety management system ISO 45001
- Certificate of High-tech enterprise
- Environmental Management System 11D1, 14A, 5CT, 7-1, 14L.

PRODUCTION AND MANUFACTURING SYSTEM CERTIFICATIONS:

- American Petroleum Institute API 4F
- American Petroleum Institute API 7K
- American Petroleum Institute API 8C
- Russian Customs Union EAC certification
- American Petroleum Institute API 6A
- American Petroleum Institute API 16A
- American Petroleum Institute API 16C
- American Petroleum Institute API 17J
- American Petroleum Institute API 15S

Entre otras certificaciones, dependiendo el rubro de los equipos.



GRUPO DE FABRICANTES ALIADOS



No.	Sector	Marca de fabricante	Tipo de producto o equipo	el uso de su producto	Tipo de alianza
1	Equipo importante de perforacion	SJ PETROLEUM MACHINERY	workover, drilling rig	perforacion/reparacion de pozo	Distribuidor
2		INTLEF	workover, drilling rig, flushby, BOP, sistema de control de pozo	perforacion/reparacion de pozo	Distribuidor exclusivo
3		ZONTVIK	workover	perforacion/reparacion de pozo	Socios
4	Equipo importante de cementacion y fracturacion	SJS	camion de cementacion, coiltubing, bombas, equipo de fracturación, y herramientas	cementacion y fracturacion	Distribuidor
5	Equipo de produccion	BOMCO	bomba mecanica, bomba de lodo, etc	produccion de crudo	Distribuidor
6		LUFKIN	unidad de bombeo	produccion de crudo	OEM
7		Himile	compresor de gas	produccion de crudo/gas	Distribuidor
8		Perfect	cabezal de pozo, arbol de pozo	produccion de crudo/gas	Distribuidor exclusivo
9		HENGTONG	cable marino para plataforma	produccion de crudo/gas	Distribuidor
10	Consumibles	ZIBO FREET	casing, tubing, type nomal and termal insulated	perforacion/reparacion de pozo	Distribuidor exclusivo
11	Transporte de crudo y gas y agua	TIANJIN PIPE	tuberia de linea sin costura	transporte de crudo/gas/agua	Distribuidor
12		SHASHI STEEL PIPE	tuberia de linea con costura	transporte de crudo/gas/agua	Distribuidor
13		BAOJI AEROSPACE POWER	bomba de transferencia de crudo, bomba de inyeccion de agua, bomba de centrifuga	transporte/inyeccion de crudo/gas/agua	Distribuidor exclusivo
14		TLHT	tuberia flexible API 15S	transporte de crudo/gas/agua en tierra	Distribuidor exclusivo
15		HAIZHONG	tuberia flexible API 17J	transporte de crudo/gas/agua en marino	Distribuidor
16		KOKO VALVE	valvulas de bola, mariposa. Etc	temperatura alta/baja, gas/cru do/agua	Socios
17		Maquina pesada	YANWA	excavador, montacarga, grua (OEM de doosan)	servicio de instalcion de tierra

帕斯卡（墨西哥）石油技术服务有限公司
与
淄博孚瑞特热能科技有限公司

Pascal (México) Petroleum Technology Services S.A. de C.V.
and
Zibo Freet Thermal Tech Co., Ltd.

战略合作协议

Strategic Cooperation Agreement

签订于 2025 年 06 月 18 日

Signed on June 18, 2025

- 1.- PRODUCTOS QUÍMICOS
- 2.- OEM (FABRICANTES DE EQUIPOS ORIGINALES.
- 3.- EQUIPOS, HERRAMIENTAS Y REFACCIONES DE PERFORACIÓN- OFFSHORE.
- 4.- EQUIPOS DE PERFORACIÓN, REFACCIONES Y COMPONENTES – ONSHORE.
- 5.- PREVENTORES (BOP´S).
- 6.- HERRAMIENTA DE FONDO DE POZO.
- 7.- EQUIPO DE FRACTURACIÓN.
- 8.- EQUIPO DE CEMENTACIÓN Y REFACCIONES.
- 9.- BOMBA DE LODO Y REFACCIONES.
- 10.- BOMBAS DE ENGRANE, CENTRIFUGAS, TORNILLO Y SUS REFACCIONES. OFFSHORE-ONSHORE.
- 11- GENERADORES Y MOTORES.
- 12.- EMPACADORES.
- 13- VALVULAS Y ACTUADORES.
- 14.- EQUIPOS DE ENFRIAMIENTO DE LODOS.
- 15.- SISTEMA DE LIMPIEZA DE LODOS.
- 16.- SISTEMA DE PROCESAMIENTO DE RECORTES DE LODO DE PERFORACIÓN.
- 17.- SISTEMA DE PROCESAMIENTO LODO DE PERFORACIÓN “EMISIÓN CERO”.

+ UBICACIÓN GEOGRAFICA EN CHINA Y PUERTOS DE ENVÍOS **PASCAL**[®]


Pascal (Yantai) Petroleum Technology Services Co., Ltd.

Ubicada en la zona de desarrollo económico del condado de Yantai, provincia de Shandong, se enfoca en los servicios de I + D, fabricación y mantenimiento de equipos del sector petrolero gracias a las alianzas con fabricantes hermanos del sector energético.

Pascal Chemical (Dongying) Co., LTD. Ubica en la zona de desarrollo económico del condado de Dongying, provincia de Shandong, se enfoca en la fabricación, desarrollo, suministro y comercialización de productos químicos para el sector de energético.



-  Tianjin Port
-  Qingdao Port
-  Shanghai Port

-  Pascal (Yantai) Petroleum Technology Services Co., Ltd.
-  Pascal Chemicals (Dongying) Co., Ltd

+ 1.- PRODUCTS QUÍMICOS

CONTENIDO / CONTENTS

Part 1 Productos para la recolección y transporte de petróleo Products for Oil Gathering and Transportation

1. Demulsionante de políter en bloque de cadena recta
Straight Chain Block Polyether Demulsifier
2. Demulsionante de políter en forma de peine de etileno amina
Ethylene Amine Comb-shaped Polyether Demulsifier
3. Demulsionante tipo resina fenólica
Phenolic Resin Type Demulsifier
4. Demulsionante de políter a base de resina de amina fenólica
Phenolic Amine Resin-based Polyether Demulsifier
5. Demulsionante modificado reticulado de políter multibloque
Multiblock Polyether Crosslinked Modified Demulsifier
6. Demulsionante compuesto modificado con políter
Polyether Modified Composite Demulsifier
7. Loción demulsionante inversa tipo agua en agua
Water-in-water Lotion-type Reverse Demulsifier
8. Clarificador de agua por copolimerización catiónica de acrilamida
Acrylamide Cationic Copolymerization Water Clarifier
9. Loción demulsionante inversa de ácido poliacrílico (éster)
Polyacrylic Acid (Ester) Lotion Reverse Demulsifier
10. Clarificador de agua a base de tioaminoformiato
Thioaminoformate-based Water Clarifier
11. Clarificador de agua a base de poliamina
Polyamine Water Clarifier
12. Clarificador de agua compuesto inorgánico-orgánico
Inorganic-organic Composite Water Clarifier
13. Antiespumante a base de políter
Polyether-based Defoamer
14. Antiespumante de aceite de silicona modificado a base de aceite
Oil-based Modified Silicone Oil Defoamer
15. Antiespumante de silicona a base de aceite
Oil-based Silicone Defoamer
16. Antiespumante tipo loción
Lotion-type Defoamer



23. Biocida orgánico de guanidina
Organic Guanidine Biocide
24. Biocida orgánico de aldehído
Organic Aldehyde Biocide
25. Eliminador de azufre de óxido de zinc y óxido de hierro
Zinc-oxide and Iron-oxide Sulphur Scavenger
26. Eliminador de azufre de triazina y triazina modificada
Triazine and Modified Triazine Sulphur Scavenger
27. Eliminador de oxígeno inorgánico
Inorganic Oxygen Scavenger
28. Eliminador complejo de azufre y hierro
Complex Iron Sulphur Scavenger



Part 2 Productos para asegurar el flujo Products for Flow Assurance

29. Depresor del punto de fluidez de acrilato e inhibidor de cera
Acrylate Pour Point Depressant and Wax Inhibitor
30. Depresor del punto de fluidez e inhibidor de cera a base de ésteres de fluorocarbono
Fluorocarbon Ester Pour Point Depressant and Wax Inhibitor
31. Depresor del punto de fluidez e inhibidor de cera en forma de loción
Lotion-type Pour Point Depressant and Wax Inhibitor
32. Eliminador de incrustaciones no ácido
Non-acid Scale Scavenger
33. Eliminador de incrustaciones ácidas
Acid Scale Scavenger
34. Inhibidor de incrustaciones compuesto de calcio y magnesio
Composite Calcium Magnesium Scale Inhibitor
35. Inhibidor de incrustaciones sin fósforo
Phosphorus-free Scale Inhibitor



Certificados de Exportación

+ 2.- SOMOS OEM (FABRICANTES DE EQUIPOS ORIGINALES)





3.- EQUIPOS, HERRAMIENTAS Y REFACCIONES DE PERFORACIÓN- OFFSHORE

MANAGEMENT SYSTEM CERTIFICATIONS

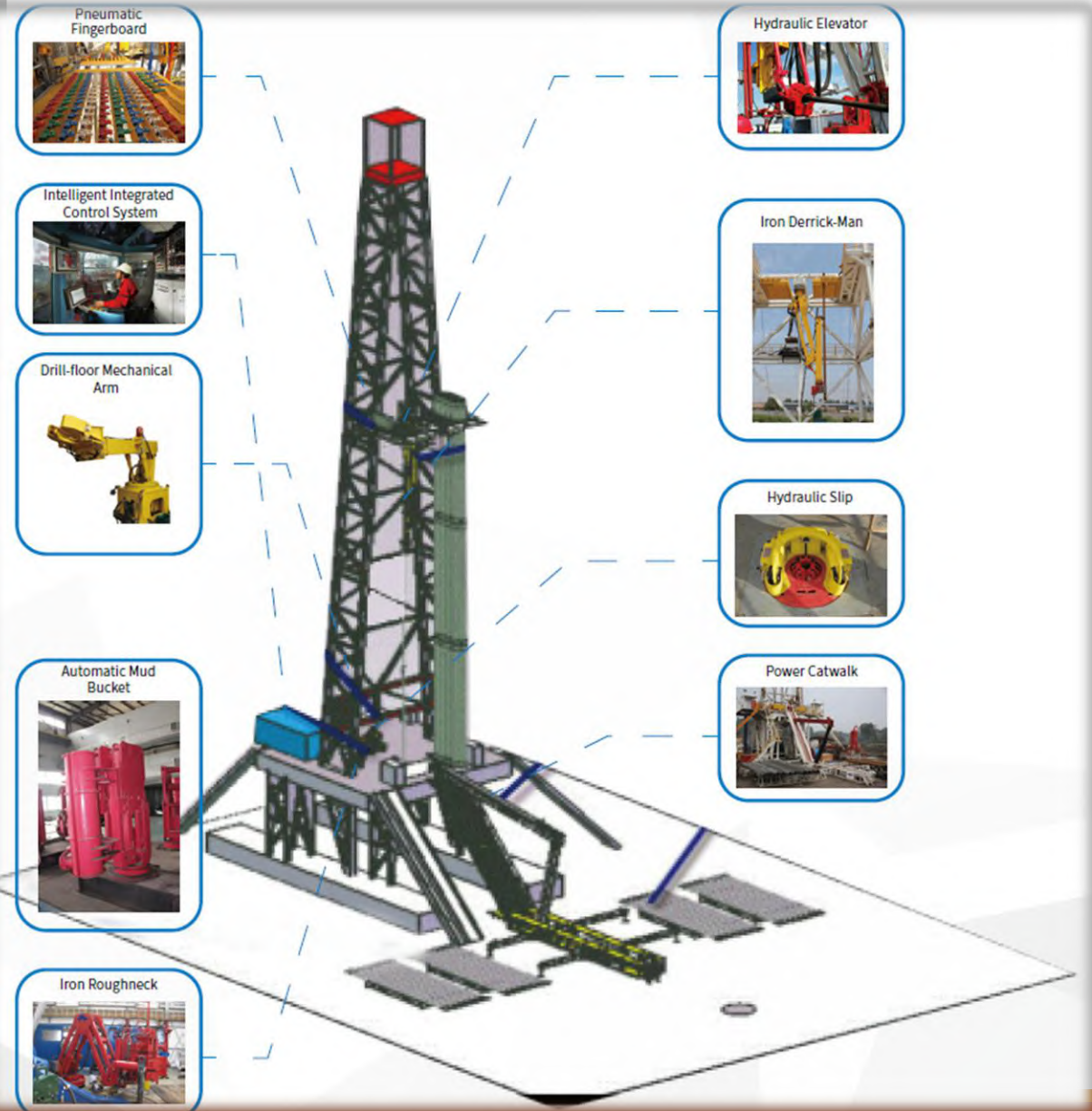
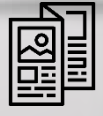
- American Petroleum Institute API Q1
- Quality Management System ISO 9001
- Environmental Management System ISO 14001
- Occupational health and safety management system ISO 45001

PRODUCTION AND MANUFACTURING SYSTEM CERTIFICATIONS

- American Petroleum Institute API 4F
- American Petroleum Institute API 7K
- American Petroleum Institute API 8C

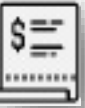


OFFSHORE & AUTOMATION EQUIPMENT





OFFSHORE & AUTOMATION EQUIPMENT



CASING STABBING BASKET



DRILLING PACKAGE



MUD CLEANING EQUIPMENT



BOP HANDLING EQUIPMENT



OFFSHORE MUD COOLING EQUIPMENT



DERRICK, RIG

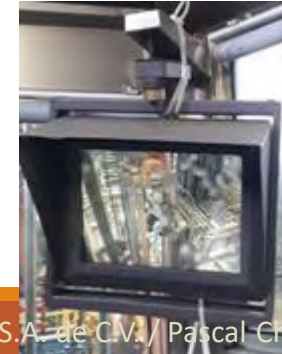
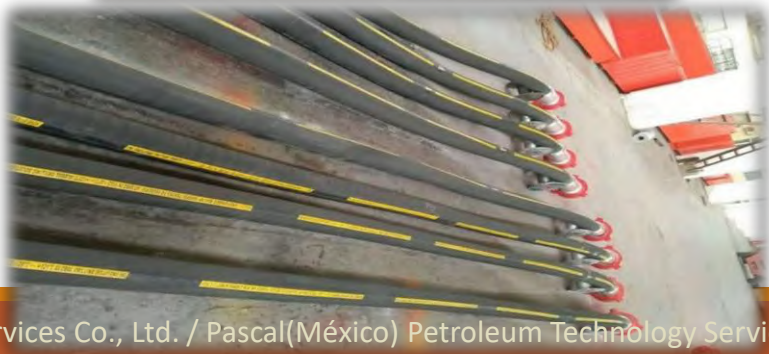
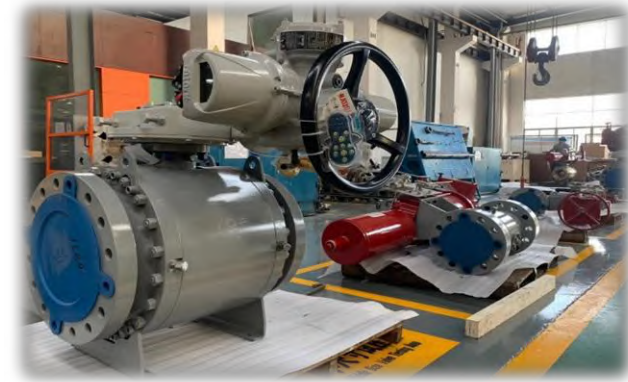
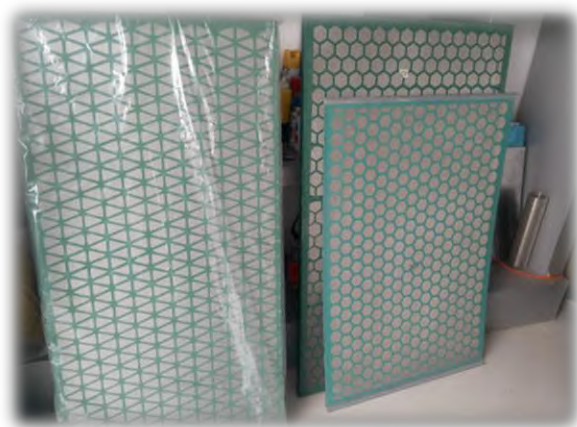
CONDUCTOR TENSIONING UNIT



IRON DERRICK MAN



HERRAMIENTAS Y REFACCIONES DE PERFORACIÓN





OFFSHORE / EQUIPOS DE AUTOMATIZACIÓN



PERFORMANCE



舰船制造
MARINE AND OFFSHORE



石化行业
PETROCHEMICAL



石油行业 OIL





4.- EQUIPOS DE PERFORACIÓN, REFACCIONES Y COMPONENTES - ONSHORE

MANAGEMENT SYSTEM CERTIFICATIONS

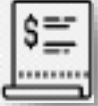
- American Petroleum Institute API Q1
- Quality Management System ISO 9001
- Environmental Management System ISO 14001
- Occupational health and safety management system ISO 45001

PRODUCTION AND MANUFACTURING SYSTEM CERTIFICATIONS

- American Petroleum Institute API 4F
- American Petroleum Institute API 7K
- American Petroleum Institute API 8C
- Russian Customs Union EAC certification



EQUIPOS DE PERFORACIÓN Y COMPONENTES - ONSHORE



Pneumatic finger



Intellectual DCC



Iron roughneck



Power catwalk



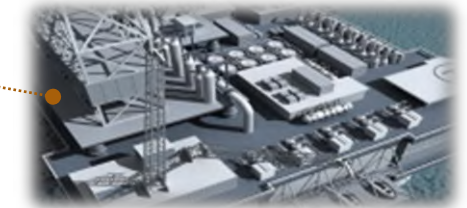
Sistema automático de manipulación de tuberías



Sistema de control de TDS



Sistema de procesamiento de lodo automático





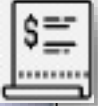
EQUIPOS DE PERFORACIÓN Y COMPONENTES - ONSHORE



- ROTARY VIBRATOR/DRILLING HOSE
- CHOKE & KILL HOSE
- BOP HOSE
- CEMENTING HOSE
- ROTARY DECOKING HOSE
- HYDRAULIC HOSE
- INDUSTRIAL HOSE
- FRACKING HOSE
- COUPLING & FITTINGS
- HOSE ACCESORIES



Copyright © 2014 JIAN HUI SHANG CO., LTD.
All Rights Reserved



Model	ZJ40	ZJ50	ZJ70	ZJ90
Max.hook load	2250 kN	3150 kN	4500 kN	6750 kN
Drilling depth (4-1/2"DP)	4000m	5000m	7000m	9000m
Rated power of Drawworks	1000HP	1500HP	2000HP	3000HP
Main brake model	Disc brake	Disc brake	Disc brake	Disc brake
Auxiliary brake model	Eddy current/Motor dynamic brake	Eddy current/Motor dynamic brake	Eddy current/Motor dynamic brake	Eddy current/motor dynamic brake
Wireline dia.	Ø32mm	Ø35mm	Ø38mm	Ø42mm
Clear height of mast	43m	45m	45.7m	48m
Height of drill floor	6/7.5m	7.5/9m	9/10.5m	10.5/12m
Mud pump	2X1300hp	2X1600HP	3X1600HP	3X1600HP
Type of driving	SCR/VFD	SCR/VFD	SCR/VFD	SCR/VFD



WORKOVER RIG SERIES



Model	XJ150	XJ250	XJ350	XJ450	XJ550	XJ650	XJ750	XJ1000
Max.hook load :kN	490	700	900	1125	1350	1470	1800	2250
Rated hook load: kN	300	400	600	800	1000	1200	1500	1800
Service depth :m (2-7/8"EU tubing)	2600	3200	4000	5500	7000	8500	—	—
Workover depth: m (2 7/8"DP)	—	2000	3200	4500	5800	7000	8000	10000
Drilling depth :m (4-1/2"DP)	—	—	—	1000	1500	2000	3000	4000
Engine power:	250 HP	325 HP	385 HP	475 HP	540 HP	700 HP	540X2HP	630X2HP
Drowworks power:	150 HP	250 HP	350 HP	450 HP	550 HP	650 HP	750 HP	1000 HP
Mast height :m	16, 18	18, 21	31.7	32, 34	32, 34	34, 35	38	39.3
Chassis driving type	6X6	6X6	10X8	10X8	10X8	12X8	14X8	14X10



UNIDAD DE BOMBEO MECANICO



Item	Parameter	Mode	C228D-246-86TH
	Polish Rod Capacity (kN)		110
	Stroke Lengths(m)		1.6 1.9 2.2
	Strokes Frequency(min ⁻¹)		6 9 12
	Balance mode		Crank balance
Gear box	Model		JS-228
	Reducer Ratio		28.87
	Peak Torque Rating(kN.m)		26
	Oil Tank(US gal)		43
Electric motor	Model		Y225M-8
	Power(kW)		30
	Rotary speed (r/min)		730
	Unbalance weight of structure (kN)		+1.76
	Total weight(t)		13.8
	Outline Dimensions (Length×Width×Height) (m)		8.85×2.15×6.55

Item	Parameter	Mode	C456D-305-144TH
	Polish Rod Capacity (kN)		136
	Stroke Lengths(m)		2.54 3.1 3.69
	Strokes Frequency(min ⁻¹)		6 8 10
	Balance mode		Crank balance
Gear box	Model		JS-456
	Reducer Ratio		28.333
	Peak Torque Rating(kN.m)		53
	Oil Tank(US gal)		88
Electric motor	Model		Y280M-8
	Power(kW)		45
	Rotary speed (r/min)		740
	Unbalance weight of structure (kN)		-1.078
	Total weight(t)		24.065
	Outline Dimensions (Length×Width×Height) (m)		11.023×2.61×89.12

Item	Parameter	Mode	C640D-365-168TH
	Polish Rod Capacity (kN)		165
	Stroke Lengths(m)		4.3 3.7 3.1
	Strokes Frequency(min ⁻¹)		5 7 9
	Balance mode		Crank balance
Gear box	Model		JS-640
	Reducer Ratio		28.363
	Peak Torque Rating(kN.m)		73
	Oil Tank(US gal)		99
Electric motor	Model		Y315S-8
	Power(kW)		55
	Rotary speed (r/min)		740
	Unbalance weight of structure (kN)		-4.94
	Total weight(t)		29.8
	Outline Dimensions (Length×Width×Height) (m)		11.63×2.63×9.14





5.-PREVENTORES (BOP' S)

MANAGEMENT SYSTEM CERTIFICATIONS

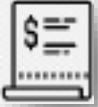
- American Petroleum Institute API Q1
- Quality Management System ISO 9001
- Environmental Management System ISO 14001
- Occupational health and safety management system ISO 45001

PRODUCTION AND MANUFACTURING SYSTEM CERTIFICATIONS

- American Petroleum Institute API 6A
- American Petroleum Institute API 16A



PREVENTORES (BOP' S)





PREVENTORES (BOP' S)



BRIDA SOLDADURA



JUNTA ANULAR



BRIDA UNION





6.- HERRAMIENTA DE FONDO DE POZO

MANAGEMENT SYSTEM CERTIFICATIONS

- Quality Management System ISO 9001

PRODUCTION AND MANUFACTURING SYSTEM CERTIFICATIONS

- American Petroleum Institute API 11D1



Well Completion Tools

Bridge Plugs

STWB Wireline Set Bridge Plug	8
SCP Composite Bridge Plug	9
STMB Mechanical Bridge Plug	10
SWRB Wide Range Bridge Plug	11
SHMB Hydro-Mech Set Bridge Plugs	12
SRWB Wireline Set Bridge Plugs (Retrievable)	13

Cement Retainers

STWR Wireline Set Cement Retainer	14
STMR Mechanical Cement Retainer	15

Stinger Seal Assemblies

STSS Stinger Seal Assembly	16
----------------------------------	----

Setting Tools

Wireline Setting Tools	17
Hydraulic Setting Tools	18
STSB Mechanical Setting Tool	19
STSR Mechanical Setting Tool	20

Tubing Centralizer

STTC Tubing Centralizer	21
-------------------------------	----

Permanent Production Packers

SPP-C Permanent Production Packers	22
SPP-XC Permanent Production Packers	23
SQS Hydro-Set Retainer Production Packers	24
SPP-R Retrievable Production Packers	25

Mechanical Setting Packers

SMR-D Double Grip Retrievable Packer	26
SMR-D Large Bore Double Grip Retrievable Packer	27
SMR-S Single Grip Retrievable Packer	28
SMA Mechanical Set Retrievable Production Packers	29

STLS Mechanical Set Retrievable Production Packer	30
SMJ-A Mechanical Set Retrievable Production Packers	31
SMJ-B Mechanical Set Retrievable Production Packers	32
SMJ-C Retrievable Storm Packer	33
SMJ-D Retrievable Packer	34
SMC Retrievable Packers	35
SME Packer (Y221)	36
SMT Tension Packers	37
SMP Pull-Push Type Packer	38

Hydraulic Setting Packers

SH-2 Hydraulic Setting Packers	39
SHF Retrievable Double-Grip Hydrostatic Single-string Packer	40
SHC Packer (Y341)	41
SHH Packer (Y344)	42

Tubing Anchor

STA Tubing Anchor	43
-------------------------	----

Others

SEJ Expansion Joint	44
SSV-2 Storm Valve	45
SAH Hydraulic Anchor & SCV Circulation Valve	46
SSJ Safety Joint & Pump Out Plug	47
Dump Bailer	48
"C" Type Sur-Grip Vise	49



- Well Completion Tools
- Coiled Tubing Tools
- Flow Control Tools



HERRAMIENTAS DE FONDO



Coiled Tubing Tools

"Torconnect" External Slip Coil Connector	50
"Slimconnect" External Slip Connector	51
"Torconnect" Internal Slip Connector	52
Roll-On Connector	53
Double Ended Roll-On Connector.....	54
Dimple/Grub screw Connector	55
Pull Plate for Coil Connector	56
Dual Flapper Check Valve	57
Twin Flapper Check Valve with Lock-Out Sleeve	58
Ball Check Valve	59
Heavy Duty Hydraulic Disconnect	60
Shear Release Joint.....	61
Dual Activated Circulation Valve (Drop Ball/Over Pressure)	62
Burst Disc Circulation Sub.....	63
Straight Bar.....	64
Down-Stroke Intensifier	65
Up-Stroke Intensifier.....	66
Down-Stroke Hydraulic Jar.....	67
Up-Stroke Hydraulic Jar	68
Roto-Hammer Impact Drill Jar	69
Hydraulic Up/Down Jars	70
Hydraulic Up/Down Intensifiers.....	71
Fluted Centralizer	72
Bow Spring Centralizer	73
Flow Activated Bow Spring Centralizer	74
Torque Thru Knuckle Joint.....	75
C.A.R.S.A.C "HT" Connector.....	76
Swivel Joint	77
Locking Swivel Joint	78
Motorhead Assembly.....	79
Motor.....	80

GS' Running/Pulling Tools.....	81
"JDC"Running/Pulling Tools	82
Flow Activated Shifting Tools.....	83
Double Ended Selective Shifting Tools	84
Tubing Anchors.....	85
Tubing Cutter.....	86
Mills	87
Rotary Jet Wash Tools.....	88
Spinning Wash tool	89
Flow Activated Hydraulic Jetting Indexing Tools	90
Nozzle Options	91
Flow Activated Releasable Fishing/Bulldog Spears.....	92
Flow Activated Releasable Overshots.....	93
Rope Spear	94
Fishing Grabs	95
Venturi Junk Baskets.....	96
Lead Impression Blocks & High Powered Magnet	97
Tubing Nipple Locators	98
Collar Stop	99



- Well Completion Tools
- Coiled Tubing Tools
- Flow Control Tools



Flow Control Tools

X Profile Nipple.....	100
XN Profile Nipple	101
F Profile Nipple	102
R Profile Nipple	103
XO/XD Circulating Sleeve.....	104
XA Circulating Sleeve.....	105
T-2 On-Off Tool	106
PX & PXN Plug	107
X & XN Lock Mandrel PX / PXN Equalizing Prong and Valve.....	108
FWG By-Pass Blanking Plug	109
RZG By-Pass Blanking Plug	110
FWB Down Instrument Hanger	111
RZB Down Instrument Hanger.....	112
FB-2 Equalizing Check Valve	113
RB-2 Equalizing Check Valve	114
B Shifting Tool.....	115
X-Line Running Tool	116
C-1 Running Tool.....	117
SB Series Pulling Tool	118
JD Series Pulling Tool	119
GS Running/Pulling Tool	120
GR Adapter.....	121
B Probe	122
F Collar Stop.....	123
Tubing End Locator	124
Single Strand Rope Socket	125
Brass Wedge Rope Socket	126
MS Rope Socket.....	127
Wireline Stem.....	128
Wireline Roller Stem	129
Knuckle Joint	130
Knuckle Jar	131

Tubular Jar	132
Link/Spang Jar	133
Wireline Intensifier	134
Wireline Shock Absorber.....	135
Paraffin Cutter (Gauge Ring).....	136
Wireline Blind Box	137
Pineapple Broach	138
Tubing Swedge.....	139
Wireline Fluted Centralizer	140
Bow Spring Centralizer	141
Two Piece Sand Bailer	142
Dump Bailer	143
Go Devil	144
Wirefinder Split Skirt	145
Center Spear	146
Two Prong Wireline Grab	147
"Baiting" Type Bulldog Spear	148
Releasable Overshot.....	149
Heavy Duty Magnet Fishing Tool	150
Impression Block.....	151
PX Plug & FWG/RZG Plug Series Tools	152



- Well Completion Tools
- Coiled Tubing Tools
- Flow Control Tools



7.- EQUIPO DE FRACTURACIÓN

MANAGEMENT SYSTEM CERTIFICATIONS

- Quality Management System ISO 9001

PRODUCTION AND MANUFACTURING SYSTEM CERTIFICATIONS

- American Petroleum Institute API 11D1



Network Control Center

System Configurations

- Fracturing Equipment Network Control System
- Blender Network Control System
- Fracturing Support Equipment Network Control System
- Data Acquisition and Processing System
- Fracturing Design and Analysis System



Manifold Equipment



Design Features

- Optimized Network Topology
- Network Redundancy Design
- Stable bandwidth and data transmission efficiency
- Multilink data exchange model, which can implement multi-node high availability cluster network control, wireless data transmission and acquisition
- Excellent operation reliability, safety and consistency
- Comprehensive Solution to Network Communication
- Equipment Fault Alarming Prompt
- Equipment Online Monitoring



Nitrogen Pumping Equipment



Fracturing Pumping Equipment 1#



Fracturing Pumping Equipment 16#





8.- EQUIPO DE CEMENTACIÓN Y REFACCIONES

MANAGEMENT SYSTEM CERTIFICATIONS

- Quality Management System ISO 9001

PRODUCTION AND MANUFACTURING SYSTEM CERTIFICATIONS

- American Petroleum Institute API 11D1



With the improvement of technical requirements for cementing job, the unit performance also advances higher standard. SJS develops all kinds of batch mixing equipments for high density, and high quality slurry. Compared with other mixing units, it has the features of wide density range (especially high density), high density precision, and continuous and batch mixing. The units are accepted and applied by more and more oil field users.

BACS-300-100A Batch and continuous mixing skid

BACT-300-100A Batch and continuous mixing truck

BCS-300-100B Manual batch mixing skid (Single tank)

BCS-300-100A Manual batch mixing skid (Double tank)

BACTLR-300-100B Continuous batch mixing trailer

BACTLR-300-100A Batch and continuous mixing trailer



and batch mixing trailer

designed for continuous and batch mixing of high quality slurry, according to at the tail end which can meet the requirements of weight bearing during the operation, through driving the hydraulic system to power the three centrifugal mixing jobs with high demand of slurry density.



ic system

system

ing during mixing operation.

enters into batch mixing tank through mixing in high energy mixing of slurry. install large power agitator in each tank. batch mixing tank cleaning system.



To satisfy the requirements of oilfield cementing job, the auxiliary equipments are developed according to different cementing techniques, including upstream water supply, cement supply, air supply, adding and mixing of chemicals, downstream job data acquisition, cementing instrument van/instrument skid, etc.

Offshore continuous liquid additive skid

Remote wireless cementing data acquisition system

portable centrifugal pump skid

Cementing instrument van

Portable centrifugal pump skid

Water tank skid

Portable air compressor skid





TPH400 Triplex plunger pump

1. Overview

The SJS TPH400 is a reciprocating, positive displacement, horizontal single acting, triplex plunger pump which is rated at 500 Brake Horsepower input maximum. The TPH400 is designed for duty well service applications such as acidizing, cementing, fracturing, well killing, gravel packing, etc.

2. General specification

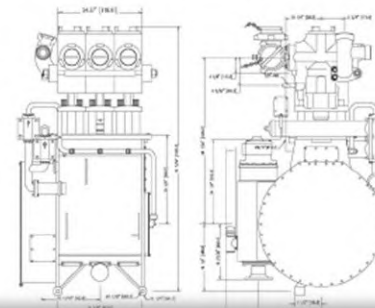
- Power end
 - Max. input horsepower : 600BHP(447Kw)
 - Max. input torque : 9782N•m
 - Stroke length : 8" (203.2mm)
 - Gear Ratio : 8.6 : 1
- Fluid end
 - Plunger diameter: 3 3/8" (85.7mm)
 - 4" (101.6mm)
 - 4 1/2" (114.3mm)
 - 5" (127.0mm)



PLUNGER DIAMETER	DISPLAC. PER REV	DISPLACEMENT AT PUMP STROKES PER MINUTE/ PINION RPM									
		32/275		70/598		126/1099		171/1469		244/1100	
		GPM	psi	GPM	psi	GPM	psi	GPM	psi	GPM	psi
3 3/8" (89.7)	693 (352)	39.7 (104)	20,000 (244.8)	64.7 (244.8)	14.314 (96.6)	118.8 (440.8)	7.780 (53.7)	158.7 (600.8)	5.932 (40.2)	227.0 (859.2)	4.078 (28.1)
4" (101.6)	1,311 (649)	41.8 (104)	14,000 (343.8)	90.8 (343.8)	10,190 (70.2)	186.9 (631.8)	5.546 (38.2)	222.9 (843.9)	4.152 (28.6)	318.8 (1206.8)	2.903 (20.0)
4 1/2" (114.3)	1,665 (825)	52.9 (200.2)	11,200 (435.2)	115.0 (55.5)	8,651 (799.7)	211.3 (198.1)	4,381 (24.0)	282.2 (1065.1)	3,280 (22.6)	403.5 (1527.4)	2,204 (15.8)
5" (127.0)	2,031 (772)	64.9 (247.0)	8,000 (62.5)	142.1 (540.4)	6,491 (44.7)	299.8 (988.1)	3,550 (24.0)	347.1 (1320.1)	2,653 (18.3)	490.3 (1863.7)	1,892 (12.8)
BHP(kw)		340(258)		600(448)		600(448)		600(448)		600(448)	

3. Standard Equipment and Features

- Lightweight and compact, and can be airlifted into remote areas.
- High strength forged-aluminum connecting rod.
- Gear pump driven off worm(s) or remote.
- Customizing discharge flanges: blank, straight with one outlet or ell with two outlet.
- High performance header-ring style packing.
- Three separate fluid-end sections that can be replaced individually.
- Pump half flanged drive coupling to conform with 1800 series driveline shaft.
- Pressure lubricated crankshaft, cross head sleeves and wrist pin bearings.



QPA1000 Quintuple pump

1. Overview

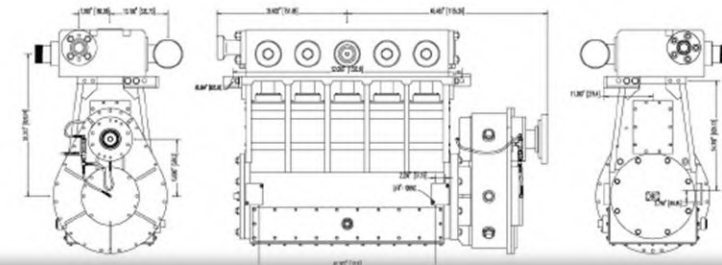
QPA1000 Quintuple plunger pump was certified by ABS, CE and ATEX. It got the DNV Type Approval, and has passed 1 million endurance test.

2. General specification

- Power end
 - Max. brake horsepower : 1000BHP(746Kw)
 - Max. linkage load: 100,000lbs(43,360kg)
 - Stroke length : 6" (152.4mm)
 - Gear Ratio : 4.6 : 1
- Fluid end
 - Plunger diameter: 2 3/4" (69.9mm)
 - 3" (76.2mm)
 - 3 1/2" (88.9mm)
 - 4" (101.6mm)
 - 4 1/2" (114.3mm)



PLUNGER DIAMETER	DISPLAC. PER REV	DISPLACEMENT AT PUMP STROKES PER MINUTE/ PINION RPM									
		80/230		120/552		200/920		300/1380		450/2070	
		GPM	psi	GPM	psi	GPM	psi	GPM	psi	GPM	psi
2 3/4" (69.9)	77 (3.3)	39 (146)	16,036 (116.1)	92 (116.9)	154 (504)	9,999 (876)	251 (44.0)	6,906 (1,314)	347 (30.7)	4,444 (25.8)	
3" (76.2)	92 (3.3)	44 (105.7)	15,000 (417)	110 (106.6)	183 (899)	8,452 (57.9)	275 (1042)	5,801 (38.6)	413 (1563)	3,734 (25.8)	
3 1/2" (88.9)	1,25 (4.7)	62 (271)	10,364 (71.7)	150 (548)	250 (247)	6,173 (42.3)	375 (1418)	4,115 (28.4)	552 (219)	2,744 (18.9)	
4" (101.6)	1,83 (6.3)	82 (358)	7,958 (54.9)	197 (142)	307 (34.9)	4,726 (1853)	460 (1250)	3,151 (21.7)	750 (2760)	2,100 (14.5)	
4 1/2" (114.3)	2,57 (7.8)	103 (382)	6,288 (43.4)	248 (938)	429 (142.9)	3,734 (1563)	620 (2345)	2,486 (17.2)	829 (3518)	1,680 (11.4)	
BHP(kw)		421(314)		1000(746)		1000(746)		1000(746)		1000(746)	





9.- BOMBA DE LODO Y REFACCIONES

MANAGEMENT SYSTEM CERTIFICATIONS

- Quality Management System
ISO 9001

PRODUCTION AND MANUFACTURING SYSTEM CERTIFICATIONS

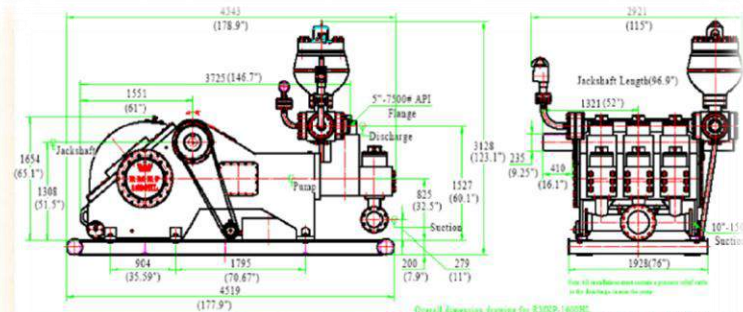
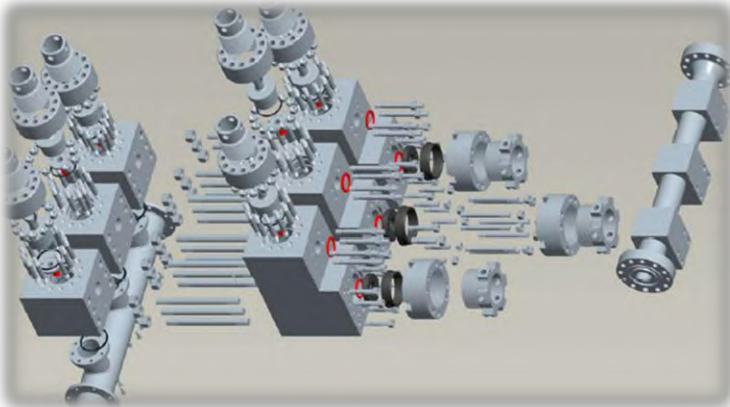
- American Petroleum Institute
API 6A
- American Petroleum Institute
API 16A

+ PZ SERIAL PUMP



MODEL: TRIPLEX SINGLE ACTING MUD PUMP

- Model:RMKP-275(PAH-275)
- Model:RMKP-310(PAH-310)
- Model:RMKP-550(PZ-7)
- Model:RMKP-750(PZ-8)
- Model:RMKP-1000(PZ-9)
- Model:RMKP-1600(PZ-11)
- Model:RMKP-1600HL(PZ-11-7500)





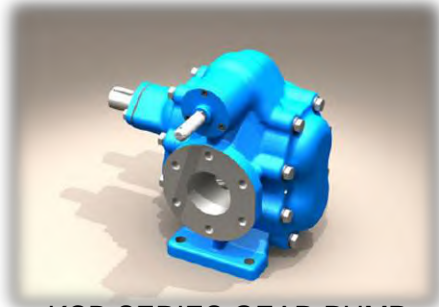
10.- BOMBAS DE ENGRANE, CENTRIFUGAS, TORNILLO Y SUS REFACCIONES. OFFSHORE-ONSHORE

MANAGEMENT SYSTEM CERTIFICATIONS

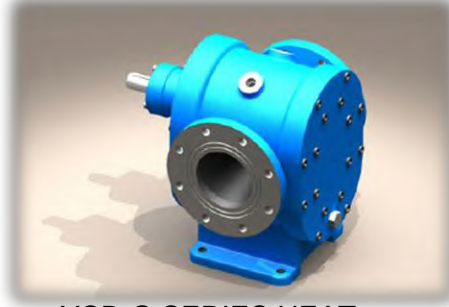
- American Petroleum Institute API Q1
- Quality Management System ISO 9001
- Environmental Management System ISO 14001
- Occupational health and safety management system ISO 45001



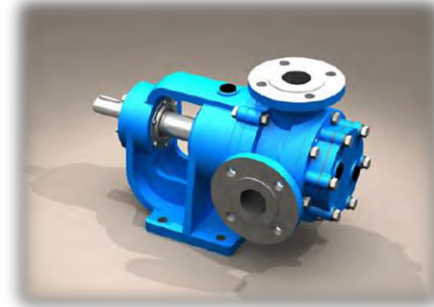
SERIE: BOMBAS DE ENGRANAJE



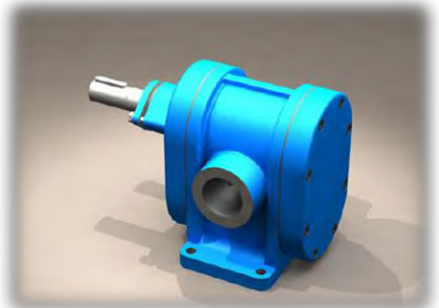
KCB SERIES GEAR PUMP



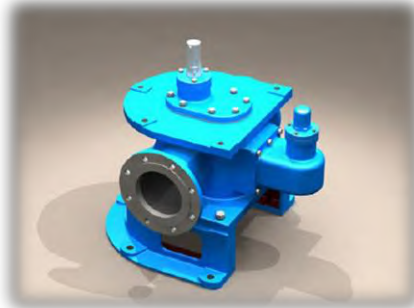
YCB-G SERIES HEAT INSULATING GEAR PUMP



NYP SERIES INTERNAL GEAR PUMP



2CY SERIES GEAR PUMP



VERTICAL GEAR PUMP



FOP SERIES FUEL OIL BOOSTER PUMP





CYZ SERIES SELF – PRIMING CENTRIFUGAL OIL PUMP



CWZ SERIES HORIZONTAL CENTRIFUGAL SELF-PRIMING MARINE PUMPS



CLZ SERIES VERTICAL CENTRIFUGAL SELF-PRIMING MARINE PUMPS



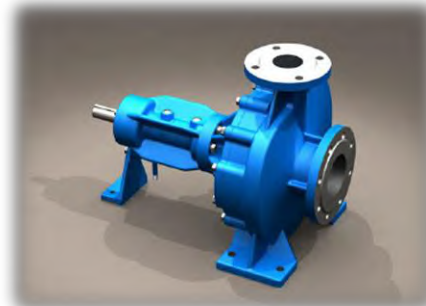
CLH SERIES VERTICAL CENTRIFUGAL SELF-PRIMING MARINE PUMPS



CWX SERIES SELF-PRIMING CENTRIFUGAL VORTEX PUMPS



WZW SERIES SELF – PRIMING POLLUTED WATER PUMP



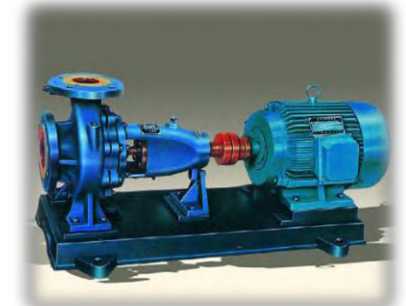
RY SERIES AIR-COOLED HOT OIL PUMP



AY TYPE SINGLE STAGE CENTRIFUGAL LUBRICATING OIL PUMP



IS SERIES CLEAR WATER CENTRIFUGAL PUMP



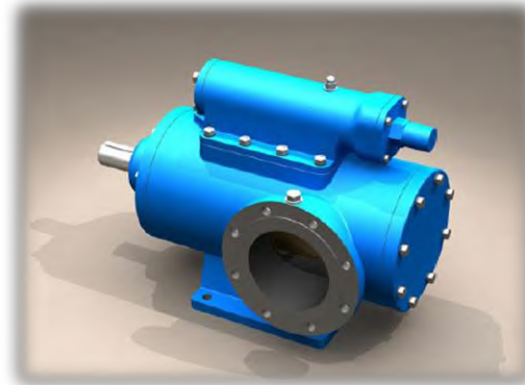
BZA CHEMICAL PROCESS PUMPS



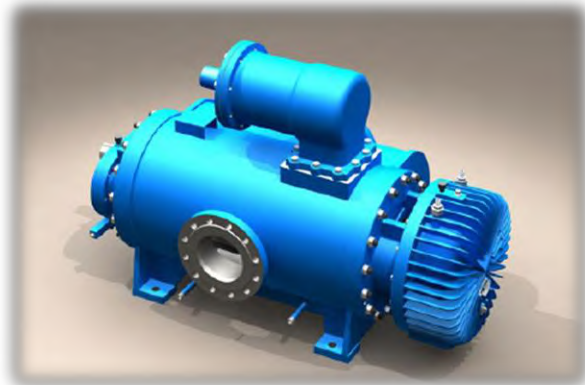
SERIE: BOMBAS DE TORNILO



SERIES SINGLE SCREW PUMP



3G SERIES THREE SCREW PUMP



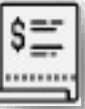
TWIN SCREW PUMP



SN SERIES THREE PUMP



PASCAL[®] 11.- GENERADORES Y MOTORES



LÍNEA DE MONTAJE DE TORRES DE ILUMINACIÓN



LÍNEA DE MONTAJE ESTÁNDAR 1



LÍNEA DE PRODUCCIÓN DE SOLDADURA DE MARQUESINA



LÍNEA DE MONTAJE ESTÁNDAR



LÍNEA DE MONTAJE ESTÁNDAR 2



LÍNEA DE PRODUCCIÓN DE SOLDADURA DE CHASIS



CONTROL DE CALIDAD FINAL

LISTO PARA LA ENTREGA



PASCAL[®] 12.-EMPACADORES

MANAGEMENT SYSTEM CERTIFICATIONS

- American Petroleum Institute API Q1
- Quality Management System ISO 9001, 11D1, 14A, 5CT, 7-1, 14L
- Environmental Management System ISO 14001
- Occupational health and safety management system QHSA 18001



COMPLETION SOLUTION

Electric submersible pump completion string

In a typical electric submersible pump completion mode, a vent valve is typically installed on fed-through packer to vent the gas below the annulus of the packer. Simultaneously control the tubing retrievable safety valve and vent valve using a control line. The control line can be connected to the injection valve through the fed-through packer.

The dual single flow valve design ensures that the well fluid does not contaminate the injection line. The fed through packer can be designed with different numbers and sizes of through-holes according to customers' needs to ensure the integrity of the wellbore above and below the packer while meeting the control of the down hole unit.

Fracturing completion

The horizontal well open-hole segmentation fracturing process can realize the one-time fracturing pipe column, and realize the layer-by-layer cracking by controlling the switches of the sliding sleeves of each layer by ball-actuated. The open-hole packer can withstand a pressure difference of 70 MPa when the well diameter expansion rate reaches 8%.





13.- VALVULAS Y ACTUADORES

MANAGEMENT SYSTEM CERTIFICATIONS

- American Petroleum Institute API Q1
- Quality Management System ISO 9001

PRODUCTION AND MANUFACTURING SYSTEM CERTIFICATIONS

- American Petroleum Institute API 6A
- American Petroleum Institute API 16A
- American Petroleum Institute API 16C



Wellhead

FMC Surface Wellhead

Frac Valves

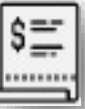
WHEN PRESSURE DEMANDS QUALITY®

Universal Wellhead Services Holdings

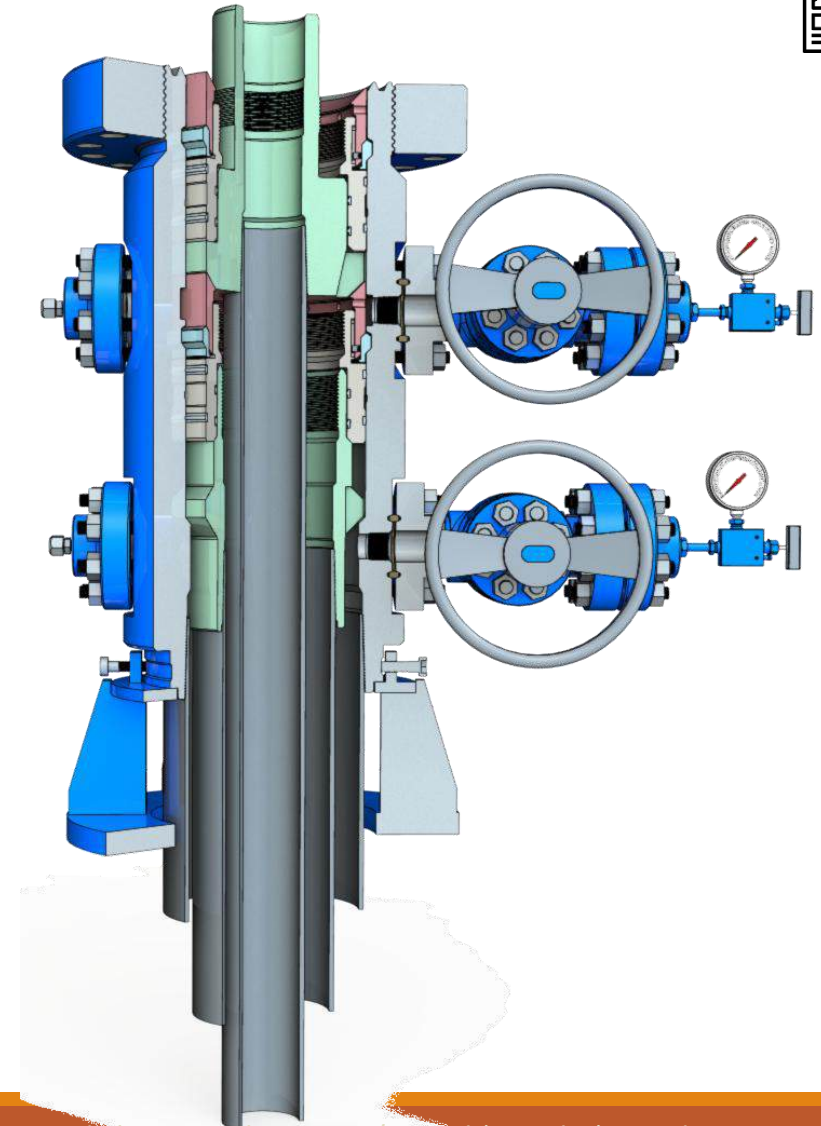
Pressure & Flow Control

FMC Surface Wellhead

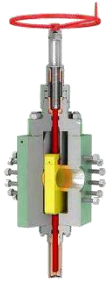
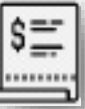
The Leader in Choke Technology



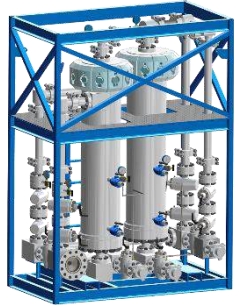
2002	GATE VALVE & WELLHEAD/X-MAS TREE - ABB Vetco Grey & Seaboard.
2005	WELLHEAD/X-MAS TREE - FMC Technologies & AOP.
2006	GATE VALVE & WELLHEAD/X-MAS TREE - Wood Group Pressure Control.
2011	WELLHEAD/X-MAS TREE - Cameron International.
2012	WELLHEAD & SAGD WELLHEAD - Stream Flo & Cactus Wellhead.
2012	BOP & MANIFOLD - Axon Energy, T3 Energy & IEI.
2013	UNI-HEAD WELLHEAD - WOM & FMC Technologies.
2013	FRAC VALVE - Bestway Oilfield, ValveWorks & WOM.
2015	13 5/8-10K BOP STACK - Drillmec.
2015	CHOKE VALVE - Lancaster Flow Automation & Master Flo.
2015	WELLHEAD OF SHALLOW WATER - KOP & Kerui.
2016	WELLHEAD/X-MAS TREE - Downing.
2017	ROD BOP - NOV & FRAC VALVE – REDCO
2019	COIL TUBING BOP – Jereh
2020	ILS WELLHEAD – Trigger Energy & Universal Wellhead
2021	CYCLONE DESANDER & BROAD SHEARING RAM ASSY – CNPC



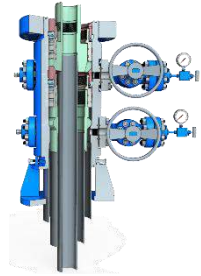
VALVULAS



FRAC VALVE



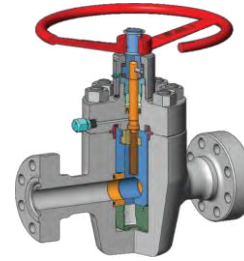
CYCLONE
DESANDER



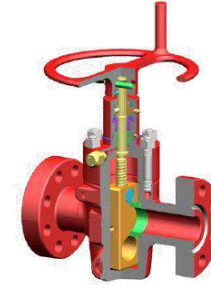
ILS WELLHEAD



VG-200 Series
VG-300 Series



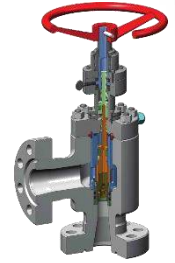
2200 Series



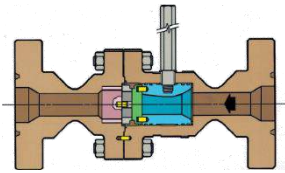
M120 Plus Series
M130 Plus Series



FC Series
FLS Series



MOS Series



MC10 & MC20 Series
M1/M2/M3/M4 Series



CA Series



2K/3K ITBOP Series



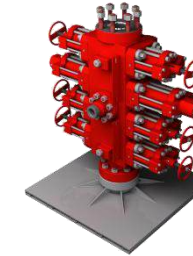
10K Dual Ram
ITBOP Series



5K ROTA ITBOP
Series



RODEC Ultimate
Tubing Rotator



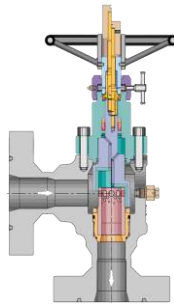
COIL TUBING
ES Series



COIL TUBING
DSW Series



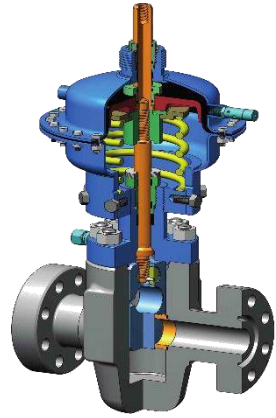
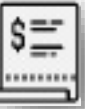
COIL TUBING
JU Series



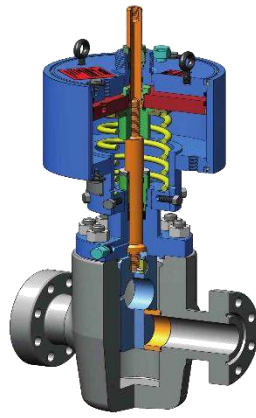
CAM20-MT Series
CAM30-MT Series



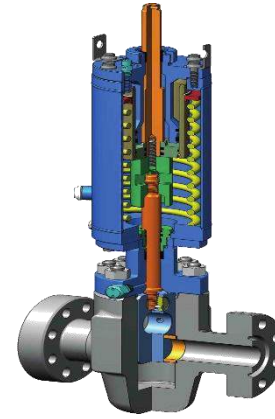
COIL TUBING
DS Series



PNEUMATIC DIAPHRAGM



PNEUMATIC PISTON



REVERSE-ACTING HYDRAULIC



RA-ESD SELF-CONTAINED



WELLHEAD AND CHRISTMAS TREE



HH wellhead and Christmas tree



Combined valve Christmas tree
Integral Wellhead and Christmas tree



Combined valve Double Pipe Christmas tree
Integral Wellhead and Christmas tree



Fracturing tree of shale oil and gas
exploitation wellhead



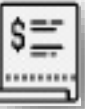
Compact wellhead and Combined valve Christmas
tree Integral wellhead and Christmas tree



Combined valve Christmas tree + Cable
Penetrator ESP wellhead and Christmas tree



WELLHEAD AND CHRISTMAS TREE



Injection and Production integrated wellhead and Christmas tree



single-pile with Three wells Wellhead (Three in one Wellhead)



single-pile with Two wells Wellhead (Two in one Wellhead)





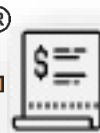
14.- EQUIPOS DE ENFRIAMIENTO DE LODOS

MANAGEMENT SYSTEM CERTIFICATIONS

- American Petroleum Institute API Q1
- Quality Management System ISO 9001
- Environmental Management System ISO 14001
- Occupational health and safety management system ISO 45001

PRODUCTION AND MANUFACTURING SYSTEM CERTIFICATIONS

- American Petroleum Institute API 4F
- American Petroleum Institute API 7K
- American Petroleum Institute API 8C
- Russian Customs Union EAC certification



Nombre	Parametros
Flujo de lodo (máximo)	190m ³ h //
Presión de diseño (máx.)	1.6 MPa/16bar
Temperatura de diseño (máxima)	120° C
temperatura del lodo de entrada	65~120° C
Temperatura del lodo de salida	40~70° C
Área efectiva de transferencia de calor	250m ² +250m ² (Un uso una preparación)
potencia de la bomba de lodo	37Kw+37Kw(Un uso una preparación)
Potencia de la bomba de circulación	18.5Kw+18.5Kw(Un uso una preparación)
Potencia de la bomba de limpieza	3Kw
Potencia del ventilador	16.5Kw
Potencia total	75Kw





15.-SISTEMA DE LIMPIEZA DE LODOS

MANAGEMENT SYSTEM CERTIFICATIONS

- American Petroleum Institute API Q1
- Quality Management System ISO 9001
- Environmental Management System ISO 14001
- Occupational health and safety management system ISO 45001
- Certificate of High-tech enterprise

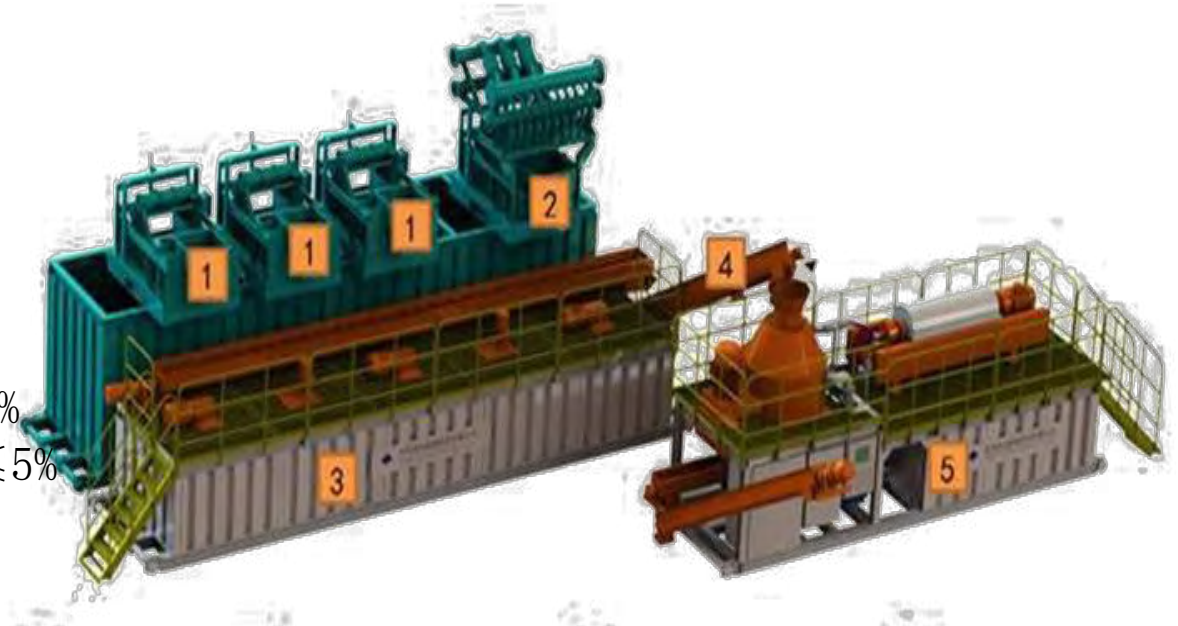
PRODUCTION AND MANUFACTURING SYSTEM CERTIFICATIONS

- American Petroleum Institute API 4F
- American Petroleum Institute API 7K
- American Petroleum Institute API 8C
- Russian Customs Union EAC certification

Parámetros técnicos

Modelo	MRD-1000
Capacidad	30-50T/h
Energía	220kw, 380V/50Hz
Residuo sólido	<p>Contenido de agua: $\leq 1\%$</p> <p>Contenido de aceite : $\leq 5\%$</p>
Partículas más pequeñas	<p>Tratamiento primario: 0.25~0.5mm</p> <p>Tratamiento secundario: 2-5μm</p>
Temperatura de trabajo	-20°C~50°C

Component Composition



- 1. Zaranda
- 2. Limpiador de lodo
- 3. Módulo de recolección de almacenamiento en búfer
- 4. Transportador de barren

5. Módulo de proceso de secado de varias etapas

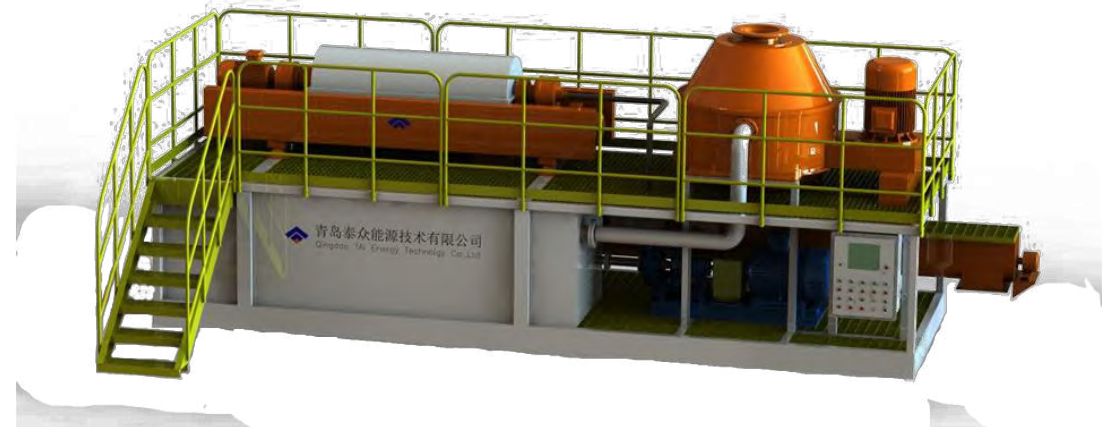
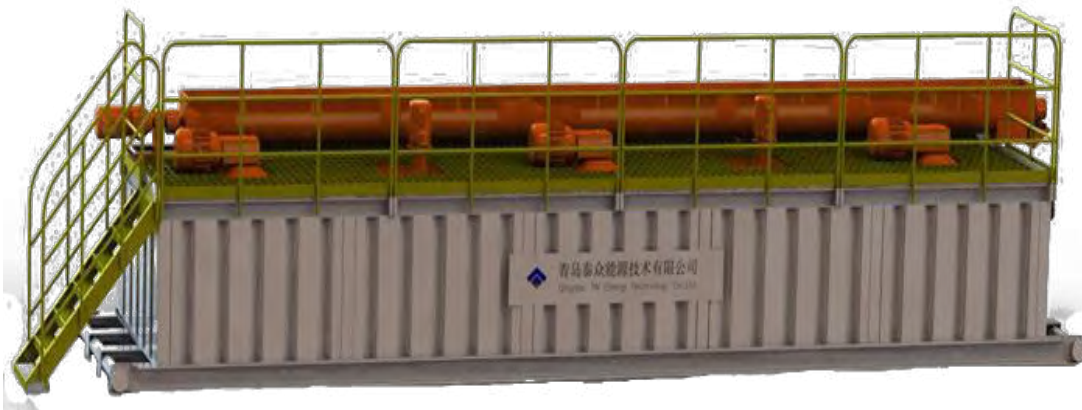


Sistema de limpieza de lodo



Módulo de recolección de almacenamiento en búfer

Módulo de proceso de secado de varias etapas





16.- SISTEMA DE PROCESAMIENTO DE RECORTES DE LODO DE PERFORACIÓN

MANAGEMENT SYSTEM CERTIFICATIONS

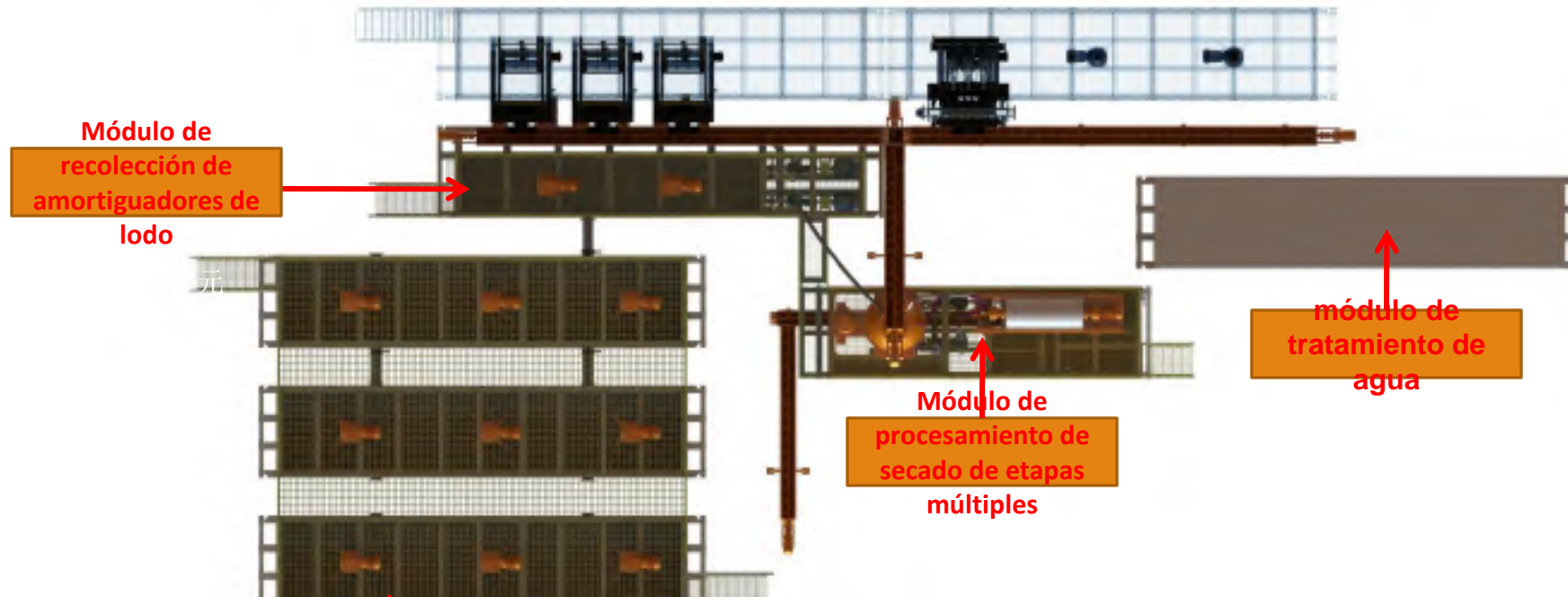
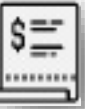
- American Petroleum Institute API Q1
- Quality Management System ISO 9001
- Environmental Management System ISO 14001
- Occupational health and safety management system ISO 45001
- Certificate of High-tech enterprise

PRODUCTION AND MANUFACTURING SYSTEM CERTIFICATIONS

- American Petroleum Institute API 4F
- American Petroleum Institute API 7K
- American Petroleum Institute API 8C
- Russian Customs Union EAC certification



SISTEMA DE PROCESAMIENTO DE RECORTES

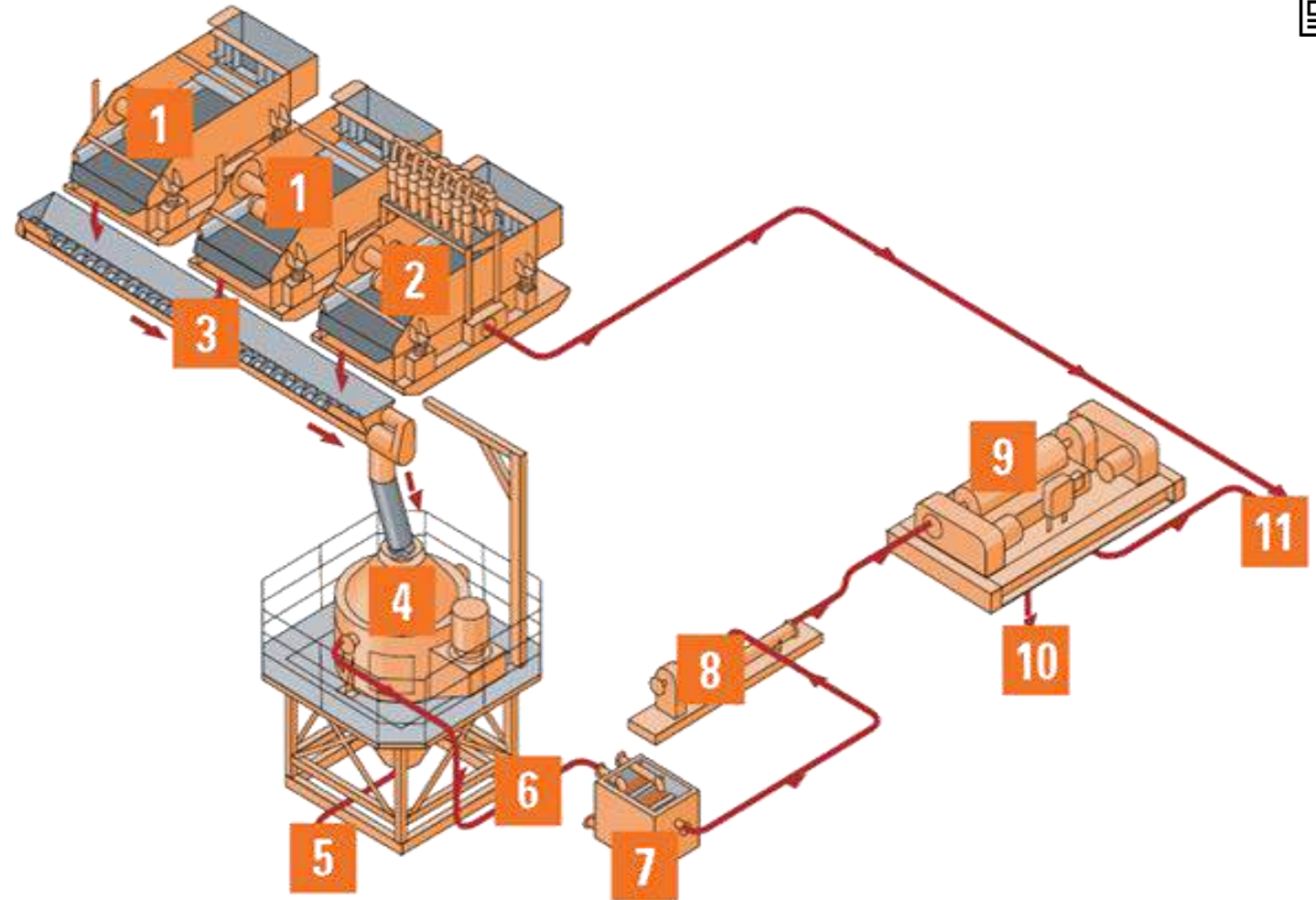


modelo	MRD-1000
máxima potencia de procesamiento	60T/h
排除固体含水率 Excluir el contenido de humedad sólida	5%
Contenido de aceite de los recortes de perforación	5%
Tratamiento primario de las partículas más pequeñas	0.25~0.5mm
Tratamiento secundario de partículas más pequeñas	2~5µm



Proceso del sistema

1. Zaranda
2. Limpiador de lodo
3. Transportador de barrena
4. Secador de recortes
5. Residuo sólido
6. Reciclaje de lodo
7. Tanque Buffer
8. Bomba de transferencia
9. Centrífuga horizontal
10. Residuo sólido
11. Reciclaje de lodo





17.- SISTEMA DE PROCESAMIENTO LODO DE PERFORACIÓN “EMISIÓN CERO”

MANAGEMENT SYSTEM CERTIFICATIONS

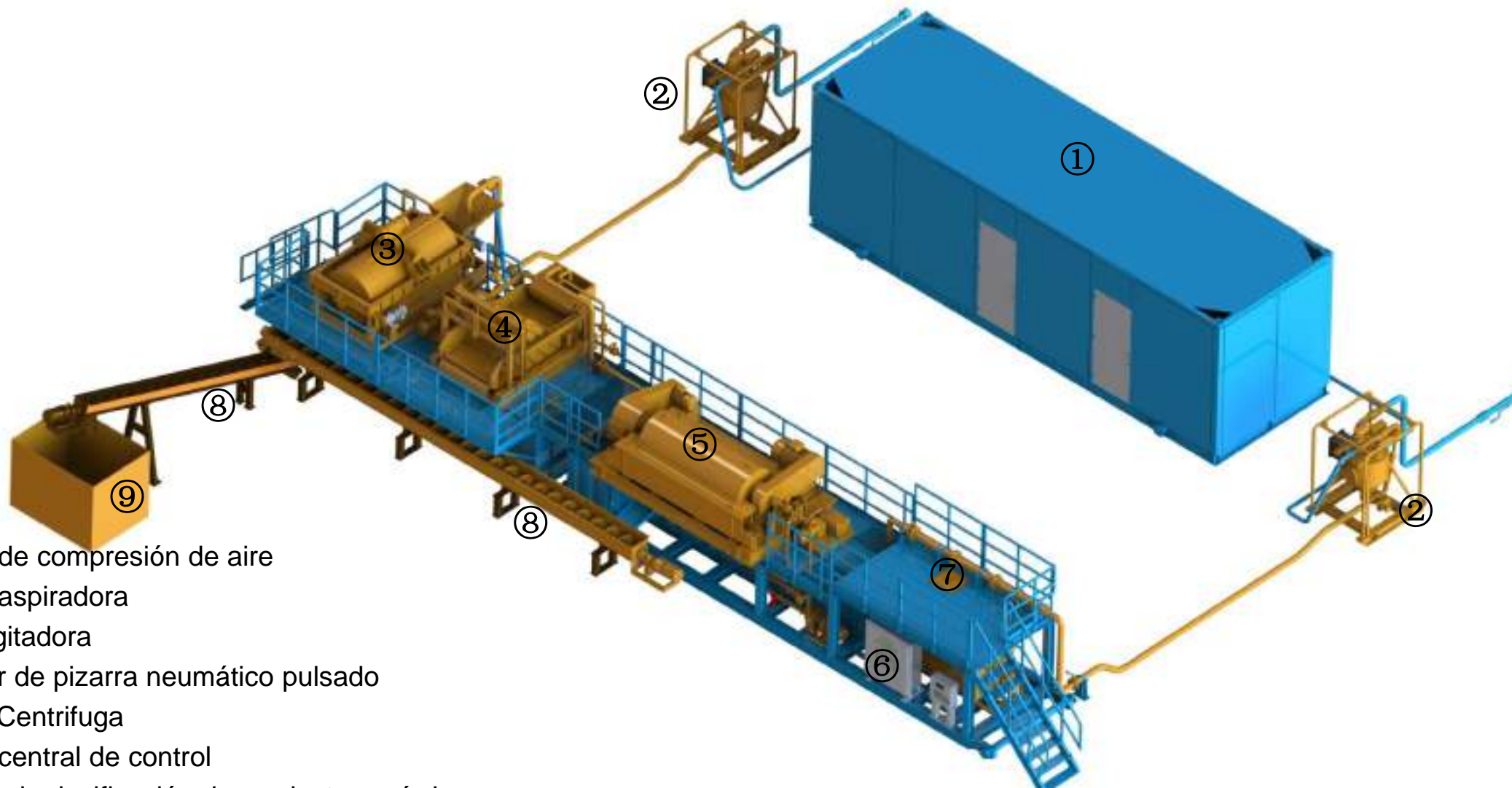
- American Petroleum Institute API Q1
- Quality Management System ISO 9001
- Environmental Management System ISO 14001
- Occupational health and safety management system ISO 45001

PRODUCTION AND MANUFACTURING SYSTEM CERTIFICATIONS

- American Petroleum Institute API 4F
- American Petroleum Institute API 7K
- American Petroleum Institute API 8C
- Russian Customs Union EAC certification



SISTEMA DE PROCESAMIENTO DE LODO “EMISION CERO”



- ① Unidad de compresión de aire
- ② Bomba aspiradora
- ③ Jaula agitadora
- ④ Vibrador de pizarra neumático pulsado
- ⑤ LW650 Centrifuga
- ⑥ Unidad central de control
- ⑦ Sistema de dosificación de productos químicos

⑧ Tornillo transportador

⑨ Caja de colección sólida



	<p>Yantai, China Pascal (Yantai) Petroleum Technology Services Limited. Address: No.264 Huamulan Street, Dongtai Street, Longkou City, Yantai City, Shandong, China. Tel: +86 15653847163</p>
	<p>Dongying, China Pascal Chemicals (Dongying) Co., Ltd Address: Room 2102, Building SOH01, Huanghe Delta International Plaza, No.58 Dongsi Road, Dongying Development Zone, Shangdong, China. Tel: +86 15653847163</p>
	<p>CDMX, México PASCAL (México) Petroleum Technology Services S.A. de C.V. Address: Anatole France #230, Polanco IV Sección, Miguel Hidalgo 11540 Ciudad de México, México. Tel: +52 9331057003</p>
	<p>Quito, Ecuador PASCAL (Ecuador) Petroleum Services S.A. Address: Pasaje E E52-39 y Las Nueces, Sector San Miguel de Amagasi, Quito, Ecuador. Tel: 593 2 6022</p>